



**MTM1460  
SERIES  
MULTIMODE**

**SINGLE FIBER BIDIRECTIONAL TRANSCEIVER**  
**One Way Video and Sensornet, RS422 or AD Manchester Code**

**FEATURES:**

- ◆ Installs into SpeedDome ROENDC End Cap
- ◆ Single Fiber Video and PTZ Control
- ◆ Derives Power from Dome's Source
- ◆ Compatible with Sensornet, RS422 or AD Manchester Code
- ◆ Compatible with the AFI M61 or M1485 Series
- ◆ Module or Rack Card Receivers
- ◆ Completely Transparent Installation

**SPECIFICATIONS:**

**Video:**

I/O Level ..... 1 V p-p  
 I/O Impedance ..... 75 Ohms  
 Bandwidth ..... 6 MHz  
 Differential Gain ..... 5%  
 Differential Phase ..... 3°  
 SNR ..... 55 dB

**Data:**

Data Rate (RS422) ..... DC to 100 Kb/s  
 Data Rate (Sensornet) ..... 230.4 Kb/s  
 Data Rate (Manchester Code) ..... 31.5 Kb/s

**Optical:**

Wavelength ..... 850/1300 nm  
 Loss Budget (850nm 62.5µm fiber) ..... 12 dB  
 Connector ..... ST

**Temperature (Operating)**

-40°C to +75°C, non-condensing

**Power Supply:**

Module Transmitter: 18 to 36 VAC @ 6VA

**Size:**

Transmitter: 4 1/4" x 3 3/8" x 1"

**Ordering information:**

MTM=Module Transmitter – Field Unit

**EXAMPLES:**

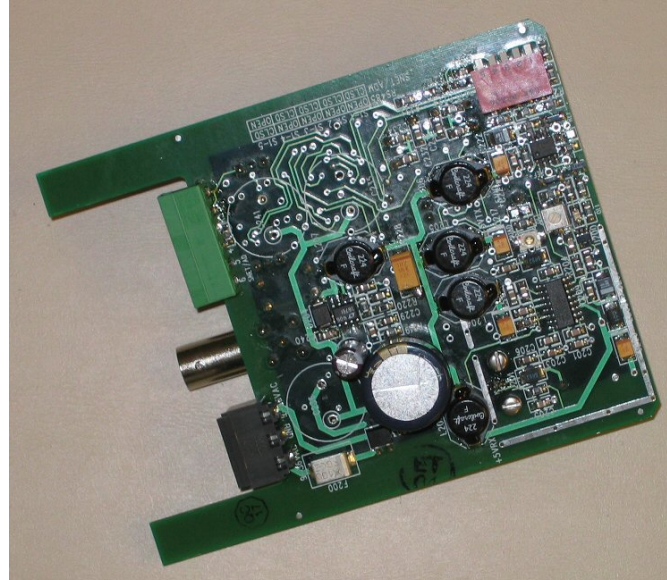
**RS422 Data:**

Module Video Tx to Rack Card Rx  
**MTM-1460 to RRM-1485**

**Sensornet Data or Manchester Code:**

Module Video Tx to Module Rx  
**MTM-1460 to MRM-61**

7/2005



The American Fibertek M1460 Series is a versatile, low cost, low profile video and data transceiver system. The transceiver is specifically designed to plug into the American Dynamics ROENDC End Cap mounting box for the SpeedDome Ultra or Optima camera dome. The system utilizes one multimode optical fiber to transmit video and data. The unit is configured by the installer for AD Manchester Code, RS 422 or Sensornet. Designed to be completely transparent, this system requires no field adjustments or additional maintenance thereafter.

The MTM-1460 is compatible with the MRM/RRM-61 receivers for Sensornet and AD Manchester Code. The MRM/RRM-1485 is used for compatibility with Sensormatic RS422 (RS485).

Compatible video receivers may be ordered as stand alone modules or rack cards that are mounted in the American Fibertek Card Cages: SR-20/1, SR-20/2 or SR-20R/1.

