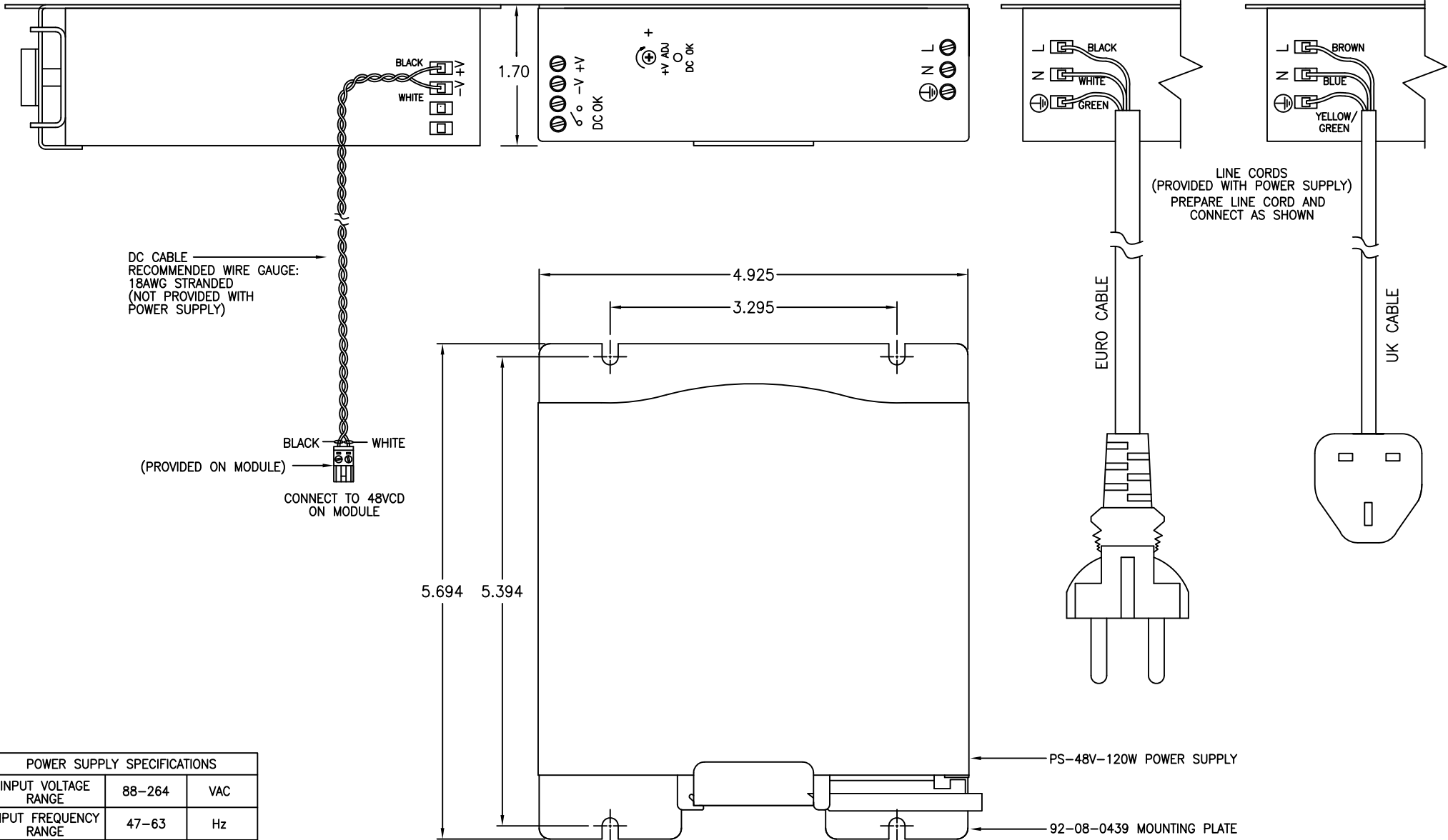


SIDE VIEW

FRONT VIEW

PARTIAL SIDE VIEW



DC CABLE  
RECOMMENDED WIRE GAUGE:  
18AWG STRANDED  
(NOT PROVIDED WITH  
POWER SUPPLY)

BLACK WHITE  
(PROVIDED ON MODULE)  
CONNECT TO 48VDC  
ON MODULE

LINE CORDS  
(PROVIDED WITH POWER SUPPLY)  
PREPARE LINE CORD AND  
CONNECT AS SHOWN

EURO CABLE

UK CABLE

PS-48V-120W POWER SUPPLY

92-08-0439 MOUNTING PLATE

Dimensions in inches

POWER SUPPLY SPECIFICATIONS		
INPUT VOLTAGE RANGE	88-264	VAC
INPUT FREQUENCY RANGE	47-63	Hz
OUTPUT VOLTAGE	48	VDC
OUTPUT CURRENT RANGE	0-2.5	AMPS
OUTPUT POWER	120W @ 25C 90W @ 75C	WATTS
DC OK CONTACT OPENS WHEN OUTPUT VOLTAGE IS NOT PRESENT	30V / 1A	

<p><b>afi</b> american fibertek 120 BELMONT DRIVE SOMERSET N.J.</p>	DATE: 08 MAR 13	<p>PS-48120-CE POWER SUPPLY ASSY</p>			
	ACAD FN.: PS-48120-CE CC				
SCALE:	DWG BY: BLB	DWG. NO.:	SH. 1 OF 1	REV.:	CHK.: [Signature]