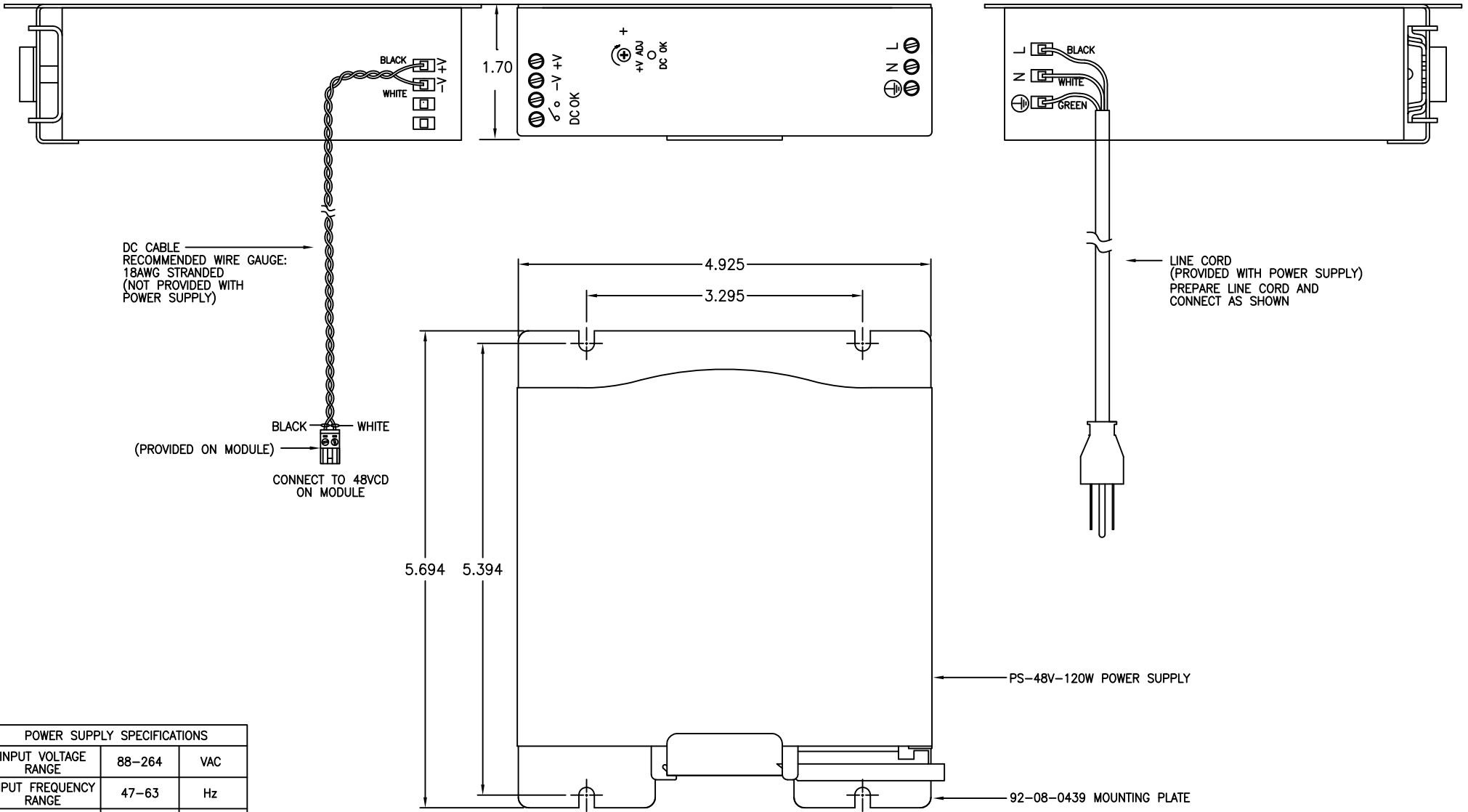


SIDE VIEW

FRONT VIEW

SIDE VIEW



POWER SUPPLY SPECIFICATIONS		
INPUT VOLTAGE RANGE	88-264	VAC
INPUT FREQUENCY RANGE	47-63	Hz
OUTPUT VOLTAGE	48	VDC
OUTPUT CURRENT RANGE	0-2.5	AMPS
OUTPUT POWER	120W @ 25C 90W @ 75C	WATTS
DC OK CONTACT OPENS WHEN OUTPUT VOLTAGE IS NOT PRESENT	30V / 1A	

afi
american fibertek
120 BELMONT DRIVE SOMERSET N.J.

DATE: 08 FEB 13
ACAD FN.: PS-48120-US CC
SCALE: DWG BY: BLB

PS-48120-US
POWER SUPPLY ASSY

DWG. NO.: SH. 1 OF 1
REV.:
CHK.: