

Environmental Security Safety Systems

**FEATURES:**

Scout is designed to protect your most value network asset: Your data. Scout monitors temperature, airflow and Humidity of both individual devices, racks, wiring, and rooms with the ability to completely integrate with existing security, alarm and Email notification systems.

10 sensor probe inputs for simultaneous readings of Temperature, Airflow, Humidity and Power: Voltage, Frequency and Wattage*

User programmable alarm and warning levels to meet any environmental requirement

10 Alarm in contacts

10 Auxiliary outputs programmable for remote, alarm in or sensor activation

Built in web services for all programming and operations. No external or client software required

Separate set-ups for Main Administrator, Security Director and IT Director

Web, email and front panel alarm and alert warnings

User programmable sensor polling for recording environmental history

>20,000 event log with separate logs for polling, event and user access

Ability to save and email logs in universal formats

Easy to view device trees with ability to control alarms and activate auxiliary contacts

NTP polling for standard reference network time keeping

Firewall/Host Authentication for addition network security

Monitoring of internal processor, fan and CPU, temperature and voltage levels with user programmable email alerts

Network enabled RS 232 and RS 485 communication ports compliant to RFC 2217 offering edge device communications and control.**

Wide operating temperature range between -30°C (-22°F) to +75°C (+167°F)

Fan Activity Mode regulates fan operation based on temperature conditions extending fan operating life and reducing maintenance costs

Network Duplicate IP Detection: Scout will alert you when any device on the network is assigned a duplicate IP address, helping to save troubleshooting time and conflicts.

**Requires purchasing of appropriate probes:*

P-TA Temperature/Airflow

P-TAH Temperature/Airflow/Humidity

P-VFP Voltage/Frequency/Wattage

***Requires Windows™ software programs with RFC 2217 compatible driver.*

Management:

SUPPORTED PROTOCOLS FOR CLIENT SIDE:

DHCP: Allows a network administrator to supervise and distribute IP addresses from a central point and automatically sends a new IP address when a computer is plugged into a different place in the network.

Three main security administration modes: Master/IT/Security with sub security levels of IT Admin with Security Views and Operating Views and Security Admin with IT Views and Operating Views.

Conformity to MIB-11 Management Information Base with the exception of EGP (Exterior Gateway Protocol).

Priority MIB defined by afi: For communication and management of specific Scout features and reporting functions.

Web based Management and Configuration: Provides user access to an on-board web server for set up, operations and status viewing. New programming will be able to be uploaded. Logs and other information screens will be able to be downloaded in .CSV format compatible with MS Word and Excel.

Ability to download Scout programming, save on client and upload, in a proprietary secure format.

High Capacity Solid State Memory: Able to record and hold events from 42 days to 3.3 years*

DHCP notification: Programmable Email notification of any IP address changes. ARP packet with IP and MAC address sent every minute. (addressable by standard free-ware such as Ehtereal and TCPDUMP). Both methods keep you up to date on Commanders using DHCP without the need to remove from system or complex external connections.

SUPPORTED PROTOCOLS FOR SERVER SIDE:

Auto Negotiation for half and full duplex mode for 10/100 Base T

Port auto recovery: to re-establish a link that has been disabled due to the network

Email and FTP for all file transfers of logs and events saved in .CSV format

Conformity to SNMPv1, v2.

COMPATIBLE WEB BROWSERS

Microsoft Internet Explorer versions 6 and 7	
Firefox Firefox 2.0	Galleon
Opera	Konquere
Safari	Netscape

PRODUCT SPECIFICATIONS:

Power: 100-240 VAC @ 50Hz-60Hz
 Physical Dimensions 1.75"(H) x 5.75"(D) x 17"(W) 44.45mm(H) x 146.0mm(D) x 431.8mm(W)
 Weight 3 pounds (approx) 1.4 Kilograms (approx)
 Network: RJ45 Ethernet female connector 10/100 Base T
 Data Port 1: RS 232 DB9 Male connector communications configurable via set up
 Data Port 2: RS 485 RJ12 Female connector communications configurable via set up
 Probes (10 ports) Standard USB connection using proprietary afi communications.
 Alarm In (10 Contacts) Programmable as NO or NC for Alarm action, Contact to ground, push to lock connector
 Maximum distance: 24 Ga 100' 16 Ga 500'
 Auxiliary out (10 Contacts) Form C: Maximum distance: 24 Ga 100' 16 Ga 500'

Industry Standards Supported:

802.3Q RFC2217
 802.3

Environmental Specification

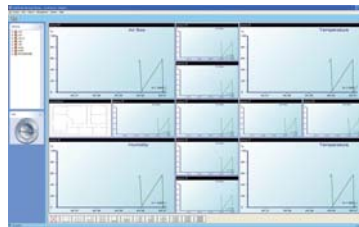
Operating Temperature Range: -22°F to +167°F: -30°C to 75°C Storage Temperature Range: -30°C to 85°C
 Operating Humidity Range: 0-95% Storage Humidity Range: 0-95%

Electromagnetic Compliance

FCC CFR Title 47, Part 15 Class A
 CE EN 55022 Emissions / EN55024 Immunity
 EN 61000-3-2 Line Harmonics / EN 61000-3-3 Power Line Flicker

Safety

UL/CE IEC 61010



OPTIONS

PRODUCT SPECIFICATIONS:

P-TA: Temperature Airflow sensor probe

P-TAH Temperature Airflow Humidity probe

Dimensions 2.5" (D) x .875" (H) x 0.4"(W)
 63.5mm (D) x 22.2mm x 10.2 (W)
 Operating Temperature -40°C to 85°C (-40°F to 185°F)
 Operating Humidity 0% to 95% RH Non-Condensing
 Weight (approx) 0.5 Ounces 14 grams
 Sensing Range Temp: 0°C to 70°C (32°F to 158°F)
 Sensing Airflow Relative reading
 Detects 15% over full temperature range

Sensing Humidity 0% to 100% Relative Humidity
 (P-TAH only)

Connector Mini-USB type B 5pin Max.distance 25'
 For longer distances, contact factory.

Power 60 mA max
 Data Transfer Rate 12 Mbit/sec (full speed USB)

Certifications:** FCC: CFR Title 47, Part 15 Class A
 CE: EN55022 Emissions / EN55024 Immunity
 UL/CE: IEC 61010

P-RB Probe Rack Mount Bracket

Mounting bracket 1.75" (44.45mm)
 Length (Full extension) 11.5" (292.1mm)
 Weight 0.5 pound
P-USB USB Male to Mini Male Cable
 Length 2 meters
 Transfer rates Up to 480Mbps
 RFI suppression ferrite clamp included

P-VFP Specifications

Physical dimensions: 3.4" X 2.12" X 1.5"
 Connectors: 5 pin MINI-B USB connector
 AC power input: IEC 320-1 3-pin
 AC power output: IEC 320-2 3-pin

Electrical specifications:
 Measured AC voltage: 0-265VAC RMS
 Measured AC frequency: 0-400Hz
 Measured load current: 0-10A RMS
 Temperature: -40°C to +70°C
 Humidity: 0 to 95% relative humidity

Optional Pilot Multiple Scout Management Software:

Pilot CS (Commander/Scout) monitors combinations of Scout Environmental Sensing units and Commander Switchers to create a seamless integrated data, environmental sensing, alarm, auxiliary and network switch control center. Alarm, Auxiliary, Network connections and sensors can be monitored from various network locations. Responses from one network location can be programmed to trigger auxiliary reactions at other network points. Pilot CS can also be used to manage Scout's RS232 and RS485 dataports. All Scout statuses are displayed in a tree with easy to read color status icons. Data from all network locations is contained with a common log for easy data searches and report generation detailing long term histories and trends. Operating with tool bar alerts Pilot can run in the background of any web based server system, DVR, NVR or even IP Cameras. Pilot can operate with other afi components or solely as a remote Scout control center. Pilot CS gives client operators the ability to conduct Client to Client communications using text instant messaging (IM) and Voice over IP (VoIP) communications. Both can be recorded and stored.

*based on one event and log recording per hour per sensor to one event and log recording per day per sensor.

Preliminary specifications subject to change without notice.
 Subject to change.

Open Path

afi
 american fibertek

120 Belmont Drive • Somerset, NJ 08873
 (732) 302-0660 • FAX: (732) 302-0667
 www.americanfibertek.com