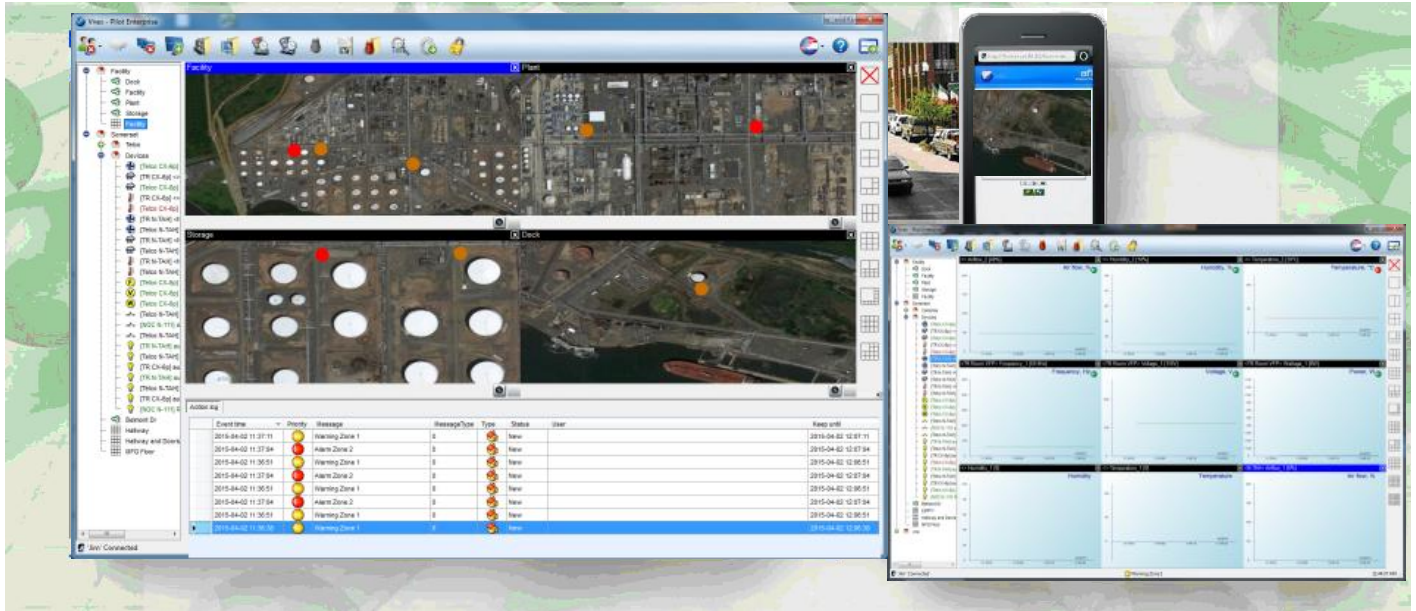


## Alarm & Environmental Monitoring Software Solution



## FEATURE

Pilot-CS Enterprise is a complete management software system for environmental sensors, Network I/O modules, and network switches.

Pilot-CS software reads alarms and status of afi's Net IO series of products to form a complete Alarm & network monitoring command center. Pilot's unique methods for handling data assures fast response search times and the ability to interact with data platforms from a majority of data generating sources. Pilot operates on industry standard server and storage solutions.

Grouping of servers allows for building large scale multiple server solutions.

Redundant and mirror server programming to assure continued operation capturing every video, audio and data input in the event of server failures

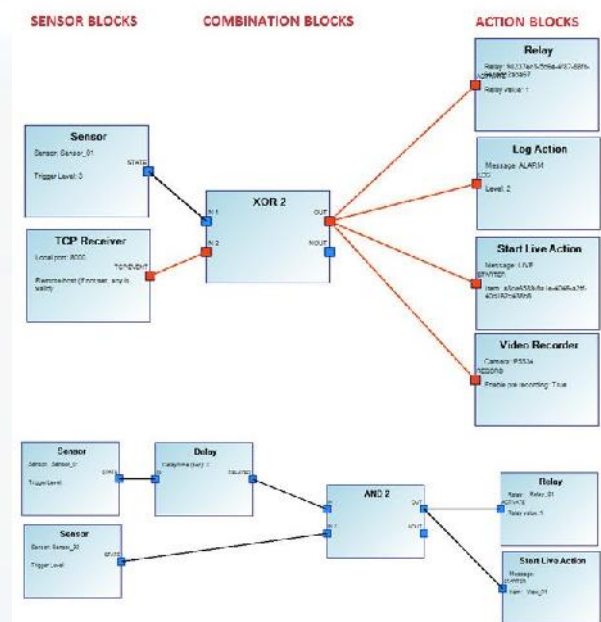
Data Integration with data parsing for external system interfaces.

Report Generator: auto multiple page generator for email with built in PDF generator.

Pilot-CS Enterprise is licensed per channel. Its cascade ability allows it be combined with any number of servers to handle hundreds and even thousand of channels.

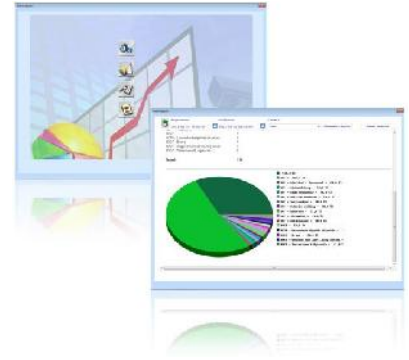
Pilot-CS Enterprise includes advance user and group functions. All features can be accessed over the network using secure permission levels.

User friendly graphical tool for configuring the I/O routing & programming. The functional modules within the system are represented by profile blocks.



## Pilot Management Features

- Windows Active Directory Integration
- Easy installation and configuration
- User-rights functionality with username and password for secure login
- Wide range of user and group profiles for company wide operations.
- Intelligent architecture offers fast data exchange.
- Dynamic floor plan support for fast situational awareness and response.
- Event notification with sound, pop-up or e-mail
- Direct management of I/O embedded in the application
- SQL database for storage of information
- Log and audit trail for management reporting
- Proactive watchdog functionality for maximized reliability and uptime.
- Instant messaging communications with text recording.
- Make Voice communications VoIP with ability to record conversations
- Redundant server operation
- Touch Screen Support
- Save and restore function.
- Unique alarm profile generator
- Multi layer floor plans
- Multi language support



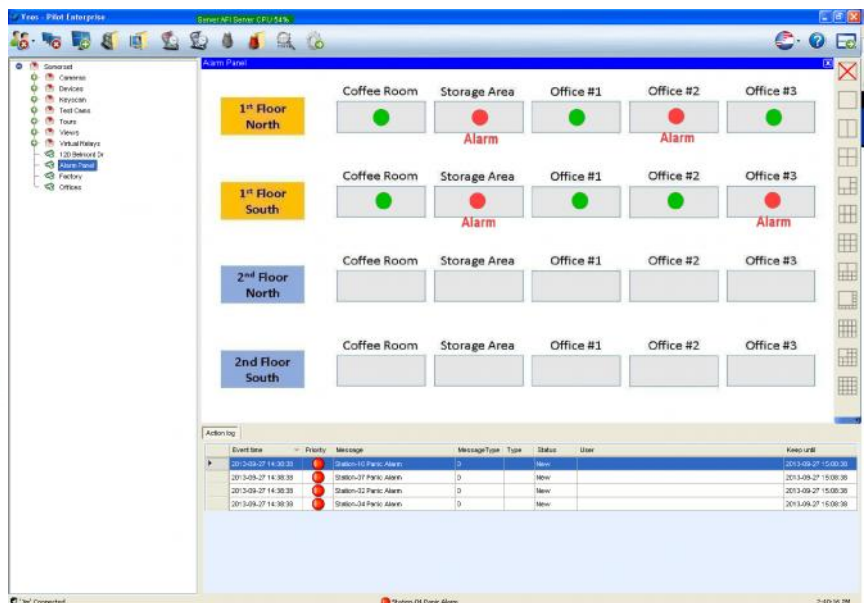
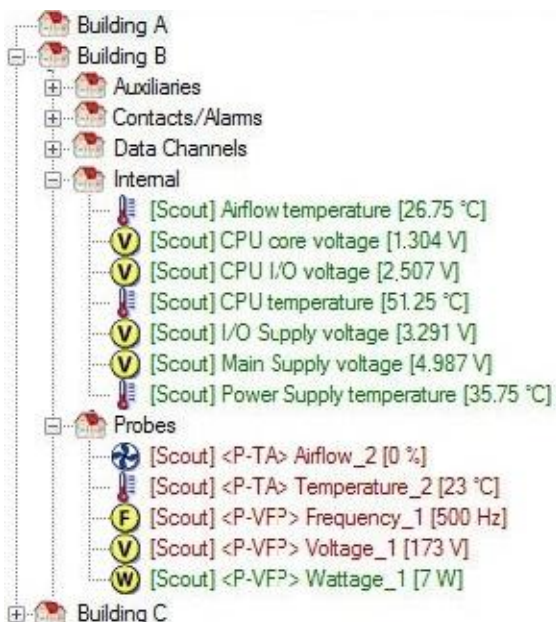
## Hardware Requirements

Hardware	Client	Server	Server/Client
<b>CPU</b>	Intel® i3, i5, i7 or Xeon E3 series processor with support for: Hyper threading and HD graphics. Intel® i7 2600 Sandybridge or better recommended	Intel® i3, i5, i7 or Xeon E3 series processor with support for: Hyper threading and HD graphics. Intel® i7 2600 Sandybridge or better recommended	Intel® i3, i5, i7 or Xeon E3 series processor with support for: Hyper threading and HD graphics. Intel® i7 2600 Sandybridge or better recommended
<b>RAM/Internal Memory</b>	4GB	8GB	8GB  Use 12GB with Full edition of SQL Server
<b>Video card</b>	VGA accelerator with minimum of 1024MB local memory Direct Draw, 3D support. DirectX 9.0c or higher. In case of multiple displays 1024 MB local memory per graphics card.  (Cards need to be identical!)		In case of using your server in combination with the client software:  VGA accelerator with minimum of 1024MB local memory Direct Draw, 3D support. DirectX 9.0c or higher. In case of multiple displays 1024MB local memory per graphics card. (Cards need to be identical!)
<b>Hard disk capacity for recordings</b>	min 250 GB (Used for exports, Actual capacity varies depending on usage and needs)	min. 500 GB (Actual capacity varies depending on operating environment)  <b>Writing speed should be equal to number of recording streams without buffering.</b>  Example: 10 cameras x 3 Mbit = Minimum writing speed (I/O speed)= 30Mbit	min. 500 GB (Actual capacity varies depending on operating environment)  <b>Writing speed should be equal to number of recording streams without buffering.</b>  Example: 10 cameras x 3 Mbit = Minimum writing speed (I/O speed)= 30Mbit
<b>Hard disk (for the application)</b>	250MB	250MB	250MB
<b>Network</b>	100Mbit (preferred 1000Mbit)  (Depending upon system bandwidth calculation)	100Mbit (preferred 1000Mbit)  (Depending upon system bandwidth calculation)	100Mbit (preferred 1000Mbit)  (Depending upon system bandwidth calculation)

# Software Requirements

Software	Client	Server	Server/Client
Operating System	Windows® 7, Pro or Ultimate	Windows® 7, Pro or Ultimate Windows® 8.1 Pro or Enterprise	Windows® 7, Pro or Ultimate
	Windows® 8.1 Pro or Enterprise	Windows® 2003R2 SP2, Standard or Enterprise  Windows® Server 2008 R1 SP2, Windows® Server 2008 R2 SP1 Standard or Enterprise Windows® Server 2012 Standard or Enterprise	Windows® 8.1 Pro or Enterprise
	* All service packs and Windows updates always fully installed	* All service packs and Windows updates always fully installed	* All service packs and Windows updates always fully installed
SQL Server software		Microsoft SQL server 2005 Express Edition <u>with SP3</u>	Microsoft SQL server 2005 Express Edition <u>with SP3</u>
		Microsoft SQL server 2005 <u>with SP3</u>	Microsoft SQL server 2005 <u>with SP3</u>
		Microsoft SQL server 2008	Microsoft SQL server 2008
		Microsoft SQL server 2012 (Only Full Edition, Express Edition not recommended)	Microsoft SQL server 2012 (Only Full Edition, Express Edition not recommended)
Internet browser	Internet Explorer (latest version)	Internet Explorer (latest version)	Internet Explorer (latest version)
Additional software	.NET Framework 3.5SP1 Adobe Reader (latest version)	.NET Framework 3.5SP1 .NET Framework 4.0 (if SQL 2008/2012) Adobe Reader (latest version)	.NET Framework 3.5SP .NET Framework 4.0 (if SQL 2008/2012) Adobe Reader (latest version)

# Real time Data Monitoring



Pilot Feature Matrix			
Base License and Maximums	Pilot-CS Enterprise	Core Features	Pilot-CS Enterprise
	Base/Max		
		Audio Support (Full Duplex)	
Max Number Of Sites	5/Unlimited	Multi Lingual Support	
Max Number Of Sub-sites Per Site	5/Unlimited	Watchdog Support	
Max Number Of Audio Channels	1/Unlimited	SAN Support	
Max Number Of Data Channels	0/Unlimited	Graphical/Scalable Time Line Search	
Max Number Of XML Channels	0/Unlimited	Report Generator Support	
Max Number Of RSS Channels	0/Unlimited	Event Manager Support (I/O, TCP-IP, SOAP)	
Max Number Of Sensors	10/Unlimited	Interactive Floor Plan Support	
Max Number Of Actuators	10/Unlimited	Web Server support (Smartphone, PDA, Web)	
Max Number Of Dynamic Floor Plans	5/Unlimited	Email Support (Text and Snapshots)	
Max Number Of Schedules	5/Unlimited	Email On Event Support	
Max Number Of Profiles	5/Unlimited	Advanced Motion Detection Analytics	
Max Number Of Sensor Blocks Per Profile	Unlimited	Touch screen support	
Max Number Of Combination Blocks per Profile	Unlimited	Action Log Support	
Max Number Of Action Blocks Per Profile	Unlimited	Multi Client Support	
Max Number Of Predefined Views	Unlimited	POS Support	Option
Max Number Of Tours	Unlimited	Content Management System Support	Option
Max Number Of Monitors Per Client	4		
Max Number Of Clients	3/Unlimited		
Max Number Of Client Sessions	2/Unlimited		
Max Number Of Web Sessions (Phone PDA Web)	2/Unlimited		
Max Number Of Users	5/Unlimited		
Max Number Of User Groups	Unlimited		
<b>Advanced Features</b>			
Group and User Management	•		
Instant Messaging/Chat Support	•		
Bandwidth Management support	•		
Group of Server Support	•		
Audit Support	Option		
Redundancy Support	Option		
Virtualization Support	Option		
Remote Monitor Support	Option		
Advanced Management Reports	Option		